

# LUXURIOUS APARTMENTS

Sumptuous and calming, each two or three-bedroom apartment simply exude class. Thoughtfully designed to maximise space, each provides expansive windows for abundant light, and takes full advantage of the unobstructed city and sea views. Experience the taste of luxury at the ready and furnished model apartment as we welcome you to living space adorned with the finest details.



## SALIENT FEATURES

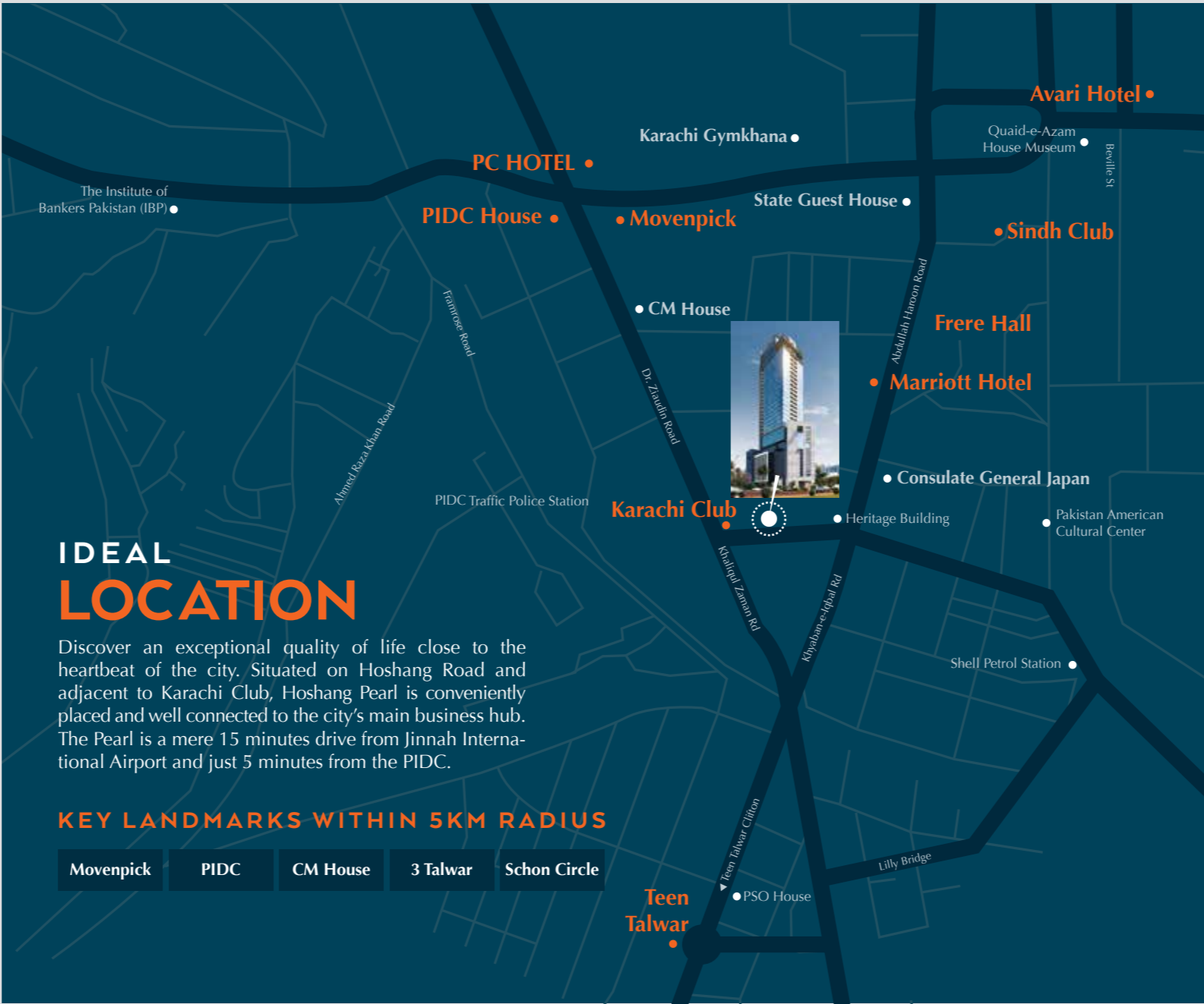
- 31 Storey Building
- Five Star Apartments & Duplex Penthouses
- Exquisite Facade and Premium Interior Finishes
- 24 Hour Concierge Service
- 11 Floors of Dedicated Car Parking
- Central Air Conditioning & Heating System
- State of the Art IT & Communication Infrastructure
- Fully Equipped Gymnasium
- Open to Sky Temperature-Controlled Pool
- Spa & Salon
- Cafe & Bakery
- Communal Prayer Area
- 5 Express Elevators
- 100% Back-up Power
- 24/7 Real Time CCTV Surveillance
- Maintenance Services round the clock
- Built on International Fire & Safety Standards

5 STAR APARTMENTS & DUPLEX PENTHOUSES

EXQUISITE FAÇADE SURPASSING MODERNITY

CENTRALLY AIR CONDITIONED & HEATING

100% STRUCTURAL WORK COMPLETED



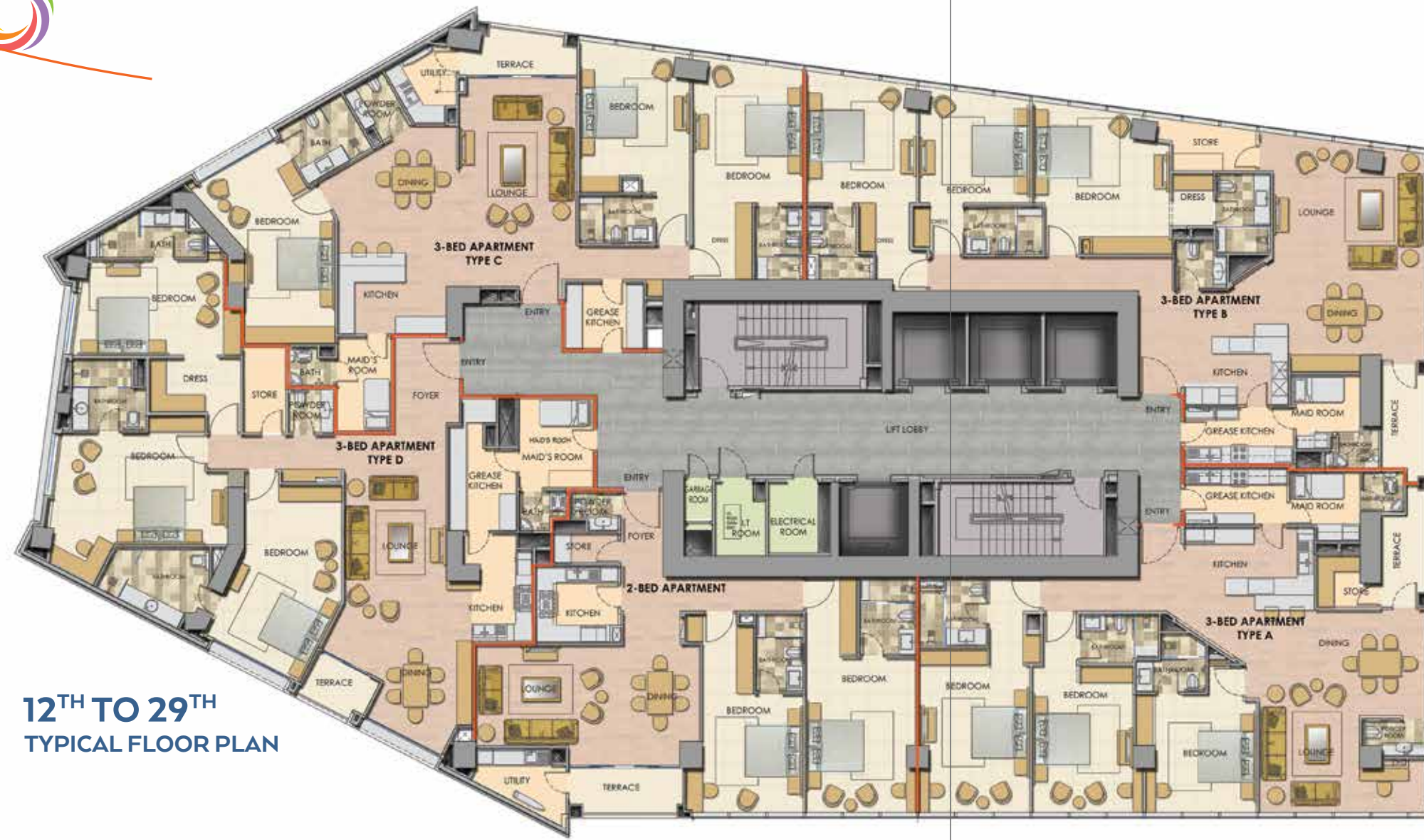
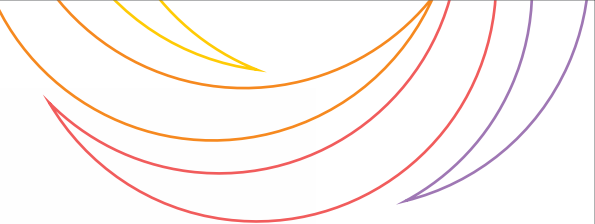
A Project By:



Hoshang Pearl Tower, Civil Line Karachi  
☎ +92 21 3432 0332-3 ☎ +92 315 727 2446  
✉ sales@hoshangpearl.com.pk  
🌐 www.hoshangpearl.com.pk

VISUALIZED BY:  
**PIXARCH**





12<sup>TH</sup> TO 29<sup>TH</sup>  
TYPICAL FLOOR PLAN



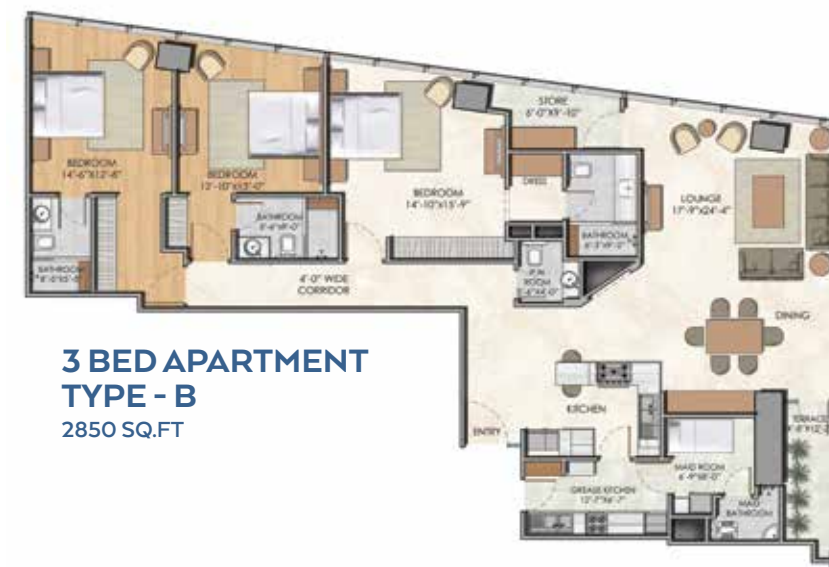
30<sup>TH</sup>  
PENTHOUSE FLOOR PLAN



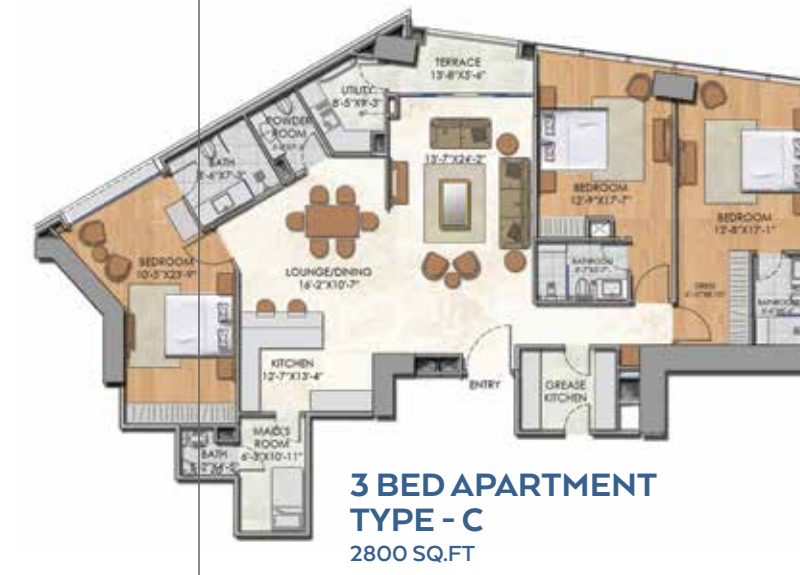
2 BED APARTMENT  
1980 SQ.FT



3 BED APARTMENT  
TYPE - A  
2650 SQ.FT



3 BED APARTMENT  
TYPE - B  
2850 SQ.FT



3 BED APARTMENT  
TYPE - C  
2800 SQ.FT



3 BED APARTMENT  
TYPE - D  
3300 SQ.FT